

Electronic Screens for Retail



Retail Screens

Keep your competitive edge with eye-catching LED shop sign boards and digital retail window displays

If you run or manage a retail business, you will appreciate the need to move at a fast pace and be agile and adaptable to keep up with your competition.

To maximise sales potential, you need to be able to change offers and prices quickly and convey this information to customers in a clear and easily understood format. Retail digital signage, such as LED retail sale signs, moving shop window displays, and LED advertising screens are an ideal way to achieve this.

At LEDsynergy, we will only recommend the most cost-effective and practical retail signage display solutions to meet your needs. If your business needs a small, simple, single line LED display, that is what we will recommend.

If your business needs a full LED window display or stunning video wall, then we are equally well equipped to design, supply, and install this too.

We can also integrate our LED shop signs into point of sale units, so you can benefit from an adaptable display that fits right into your corporate branding.

LED Screens and Ticker Displays are ideal for Point-of-Sale displays within a Retail environment with constantly changing information



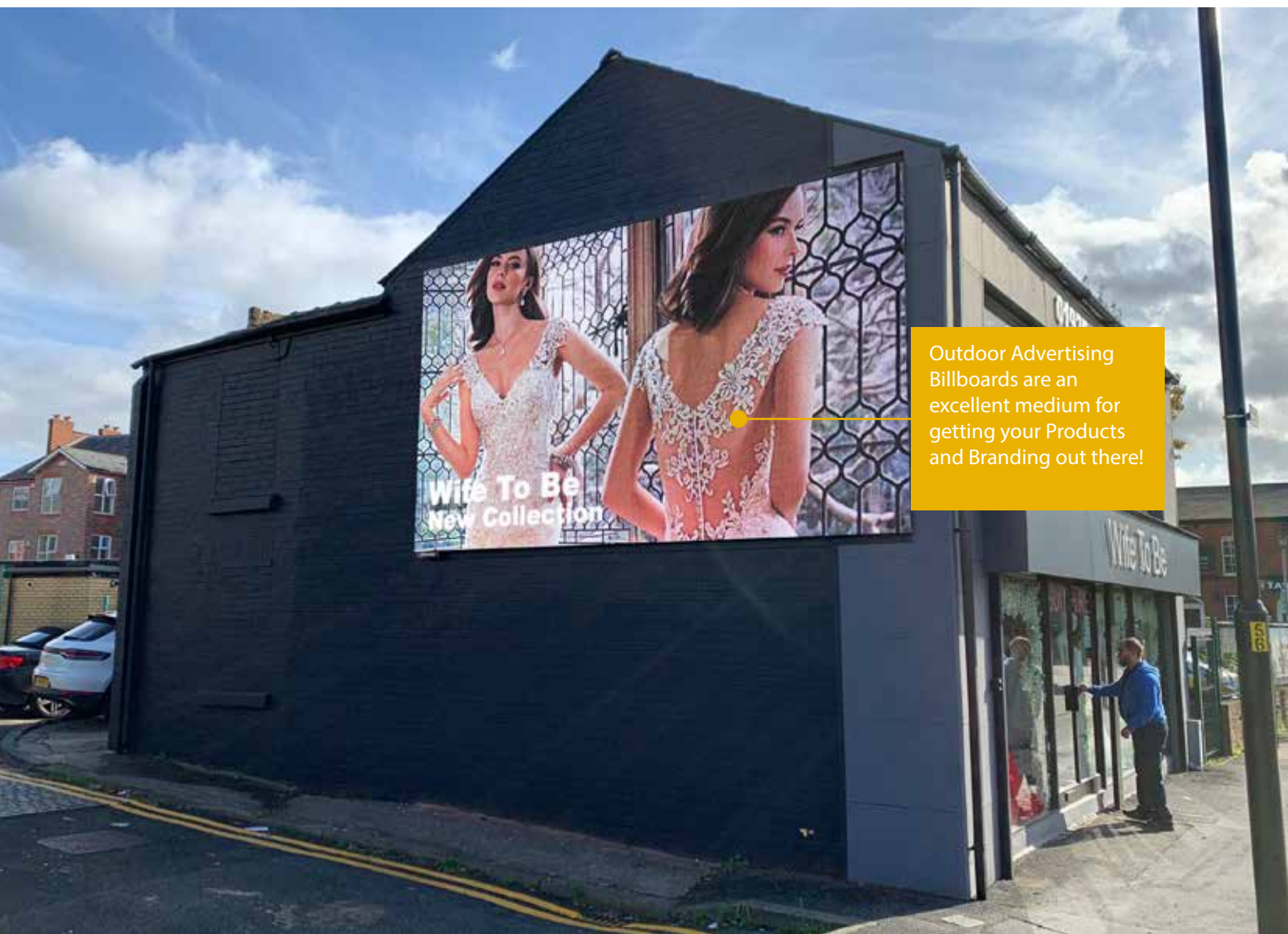
In retail, a display screen for advertising is a powerful tool that captivates customers with eye-catching visuals and promotions, effectively conveying your brand's message while showcasing products and services.

Here are some of the benefits of using digital screens in retail stores:

- Improve customer experience by communicating the latest offers and promotions with scrolling or flashing displays
- Stand out from your competition and make an impact with different text formats
- Use colours or even incorporate a full colour video wall for complex promotional campaigns

- Instantly update your displays to keep ahead of competitors
- Have a display that perfectly fits your brand and store design
- Have bespoke casing, so you can seamlessly fit your display into your other fixtures and fittings

The use of electronic retail signage, specifically LED indoor displays, really enhances the shopping experience and increases customer engagement. Our eye-catching displays are an innovative visual tool and can be used to raise brand awareness and draw customers into your store.



Outdoor Advertising Billboards are an excellent medium for getting your Products and Branding out there!

Point of Sale Displays

In the expanding and highly competitive retail and shop environment, the need for eye-catching and exciting merchandising methods is ever increasing and more demanding. An electronic LED display built in to a POS or as part of the main stay within a store is a great means of wooing the public into your store and ultimately, spend some money!



Warehouse Merchants



Advertising Screens



Bespoke POS



Shop Fascia Signage



Window Displays



Interactive Screens



Ticker Displays



Bespoke Screens

LCD for Retail

There are many different type of screens and displays that are used in the Retail environment, some of which are shown here. From Wall Mounted Screens, Totem Displays, Window Signs, Indoor or Outdoor Billboards or something more specific such as POS Shelf Displays or Shop Front Signage, then we can fulfill your LED and LCD signage needs.



Totem Displays

Indoor and Outdoor LCD Totem displays are ideal in a Shopping Centre as it's a superb way of keeping customers informed about shops, promotions and general information.

The screens can also be touchscreen so the customers can interact to get the information they require.

Our external LCD totem displays are fully waterproof to IP66 with an ergonomically streamline casing which is manufactured from galvanised steel with powder coated finish in several colours. Many different screen sizes are available from 32" up to 85".



Large LCD Wall

We can install several LCD screens within a bespoke framing or casing to create a large LCD freestanding display, alternatively it can be installed onto a wall.

This is ideal for large advertising displays within a shop or showroom.

LCD Wall Screens

Our slimline Indoor LCD screens are ideal for the retail and commercial environment, where continual adverts and promotional information is being pumped out to the customers.

Many different screen sizes are available from 32" up to 85".



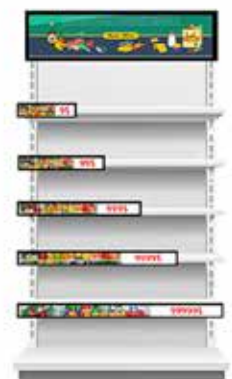
LCD Window Screens

Our single sided and double sided slim window advertising digital screens work tremendously well in the retail environment, displaying adverts and promotions to consumers both inside and outside the shop or showroom.

All screens are high definition in landscape or portrait.

The screens can be either top hung on chains or brackets from the ceiling, or floor standing on a stand.

They have built in Wi-Fi so updating is easy, and with high brightness for window use, they are ideal for any shop.



LCD POS Promotions

The single sided stretched LCD displays, which come in an array of sizes are ideal for point of sale promotions where a multitude of offers can be shown to customers.

The screens can be installed either landscape or portrait onto a wall or shopfittings, to suit your application.

They have built in Wi-Fi and a viewing angle of 170°, these high definition screens are a stunning addition to your retail shelving and at product level or in promotional areas, will catch the eye of any potential customer.

Shop Screens

Over the years the traditional method of retail advertising was static signs and maybe an illuminated sign or two. In more recent years however, we have had an explosion of LED video screens being introduced into the retail sector which has completely revolutionised the way the retail industry advertises and promotes its products.



Small Pitch Displays

Our high resolution, small pitch LED displays produce a stunning effect and of course gives more flexibility on what content can be shown.

Retail Entrance

From standard shop fascias to completely bespoke signage for a shopping centre entrance, a curved display or standard screens used in an unusual way.

With small pitch LED screens being the norm now, the displays can show stunning high definition and ultra high definition content, both images, text information and of course stunning video content. So the only limitation on the possibilities of what you can show is your imagination and with the flexibility of the modules, means that you can have almost any size you wish!



Large Scale Screens

For venues and entertainment centres, we can install a large scale video screen, which can show all your venue's events and showings to great effect,

Curved Screens

We can create a bespoke curved screen for promotions in areas such as cinemas and theatres, not only showing the programme on offer, but food and hospitality information.

You Can Trust Us

With well over 40 years of manufacturing and supplying LED screens and displays to the Retail Industry as well as many other Industries, we are confident that we can supply you with the screens and displays that are 'just right' for you and your customers.

From the initial enquiry through to concept design and quotations and onto supply and installation, you can be assured that you are in very safe hands, we've been doing thing a very long time and we know what we're doing!

Whether you need just a simple text only display, bespoke signage, or a large scale retail billboard, then we can fulfill your requirements.

Get in touch and we can have a chat - 01264 303030.



Easy to Use

Our LED and LCD screens and displays can be operated very easily with our LEDsynergy software.

Whether you have a single display which can be hard wired to a laptop controller, or multiple displays in several locations which operated by Wi-Fi, there are many ways to programme your screens, give us a call to discuss your connection solution.

We are very proud that we develop our LEDsynergy software here in the UK, with our in-house software developers continually tweaking our software to keep it up-to-date.



British built - affordable satisfaction guaranteed



What we do

As an **established leader in the UK** with over 40 years experience in the business of supplying programmable LED screens and LED displays, you can be sure that we'll give you the right advice and excellent service, these are the values that we hold dear.

We are a British company and we pride ourselves in our commitment to our customers, product performance and quality of service. In the past 40 years or more we have installed in the region of over 20,000 LED screens and displays to a broad spectrum of clients.

As a British LED screen manufacturer we are able to offer a **complete bespoke service from concept to commissioning** offering you the most cost effective solution to your needs with the knowledge that your LED solution, including software, has been built here in the UK.

If you'd like to talk to us about how we can help you just call us. There's no obligation and **we don't charge for quotations**. We can work together to be sure that the LED display we offer you is absolutely the correct solution for your requirements.

For demonstrations and to view our extensive range of LED displays please contact us to arrange a visit to our showroom at our base in Andover, Hampshire. Just call us on **01264 303030**.

Testimonials

" I've dealt with a lot of LED companies and I wouldn't ever now consider moving from LEDsynergy "

Paul Holland - WAE Group

" I am over the moon!"

Quartermaster
- Army Land Forces HQ

" Well done, system all up and running for D-day, and very positive comments from all the staff. "

Richard Aschough - Bank of England

" Fantastic! - Replacing a scoreboard originally installed by LEDsynergy in the late 90's! "

Gerry Mc Mahon - Clyde FC

" Brilliant, thanks for a wonderful service & product! "

Chris Priddy - Qinetiq

" The LED check-in signs are working very well and appears to be speeding up our processes, a very good investment so far "

Mark Mason - Center Parcs

Accreditations



www.LEDsynergy.co.uk
Tel: 01264 303030 **sales@LEDsynergy.co.uk**