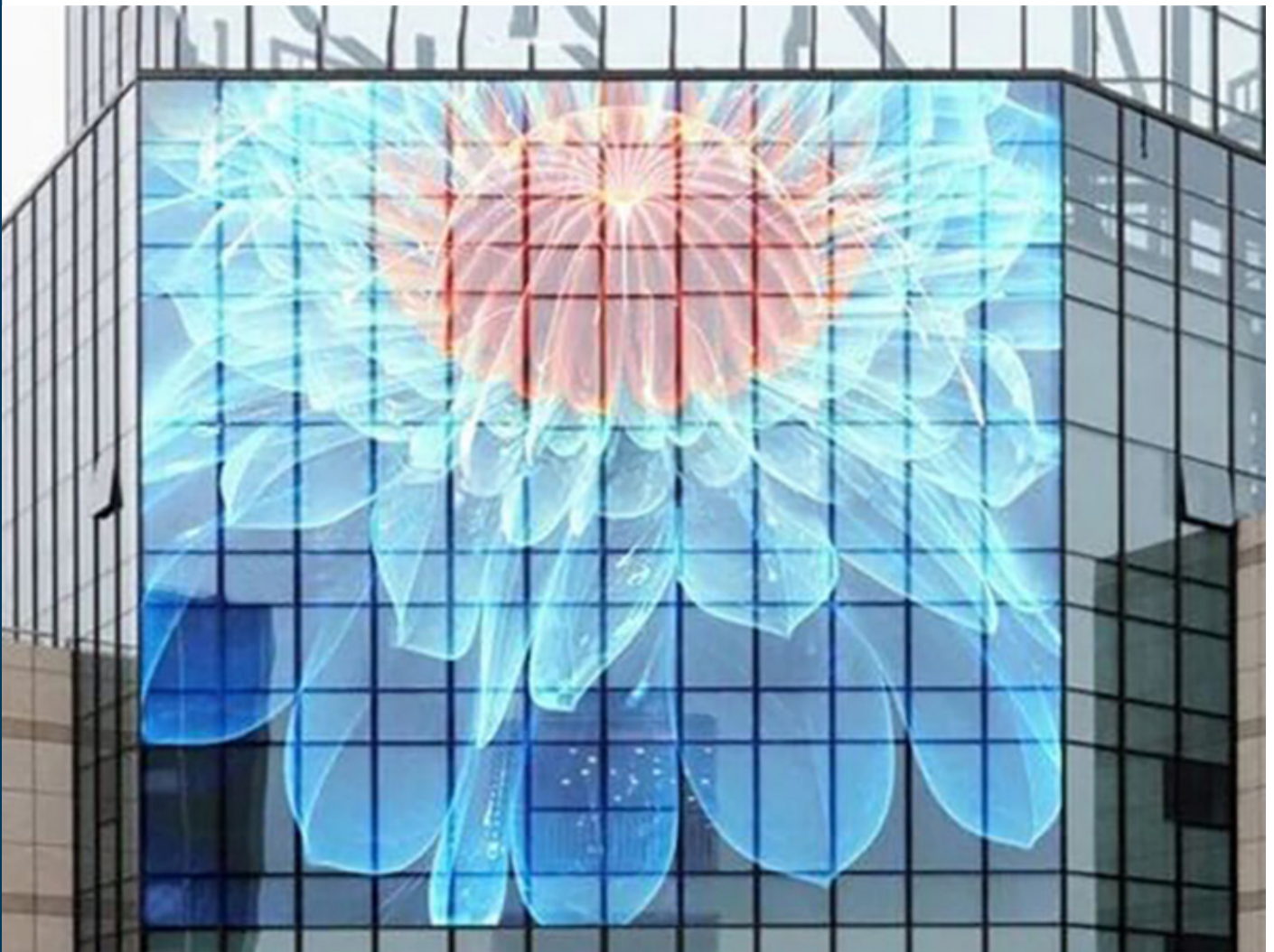


## LED Transparent Glass Screen



## LED Transparent Glass Screens

### LED Transparent Displays Benefits and Features

#### Transparency

- LED video display with up to 95% transparency.
- Viewing from within the building to the outside.
- Natural daylighting can still stream through.

#### Stunning Display

- Supports a wide range of advertisers on one display without compromising graphic quality of the message.
- Dynamic media presentation will draw attention and impress.
- Available in multiple versions selected and recommended to meet your needs.

#### Sustainability

- Automatic LED luminance control adjusts light intensity for ideal viewing and significant energy reductions.
- Mesh provides passive insulation from sun for sunshading, daylighting and improved air circulation.

#### Visual Appeal

- Images appear to float on the surface of the glass.
- Visual experience is fun, dynamic and engaging.
- Visual presentation creates curiosity and attracts attention.
- Powerful motion graphics and colour.
- Elegant advertiser branding.





# LED Displays

## LED Transparent Glass Screens

### Stunning Innovation



# LED Displays

## LED Transparent Glass Screens

### Types of Transparent Glass Screens

There are three main types of LED transparent screens for window applications, according to different applications and technical requirements:

#### Transparent Mesh Screen Panels

The transparent mesh grid LED screen is named for its grid-like design and is suitable for large curtain walls and facade advertisements. Its characteristics are relatively low price, but the transparency is relatively general, which is suitable for projects that do not require high visual effects.

#### Transparent Film Screen

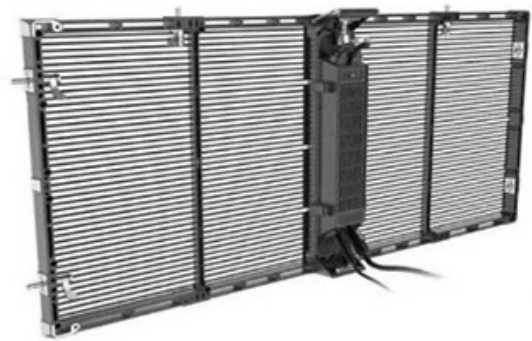
The transparent film screen is a film-type screen that can be used directly by attaching it to the glass. It has the characteristics of high transparency and light weight, ultra-light and ultra-thin, and is very suitable for indoor display, retail window display, and car showroom applications.

The film is ultra thin and ultra light with a high transparency. The film is bendable and can be easily installed onto curved surfaces.

#### Transparent Flexible Screen

The flexible screen is an upgraded version of the grid mesh screens, It is directly applied to the glass and is widely used in large exhibition halls and shopping centres because of its flexibility in being installed over curved and complex shapes.

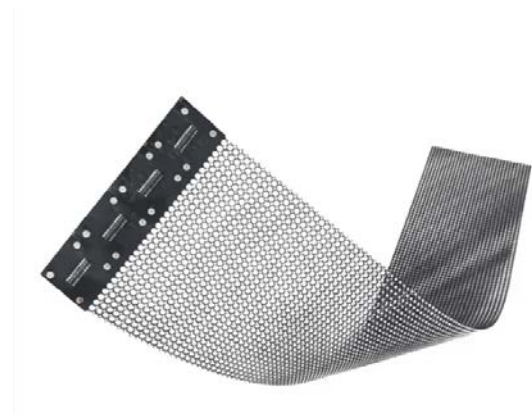
With stunning content it can create a sort of holographic effect, with images seemily floating in the air.



Transparent Mesh Screen Panels



Transparent Film Screen



Transparent Flexible Screen



# LED Displays

## LED Transparent Glass Screens

### Transparent Glass Mesh LED Panels

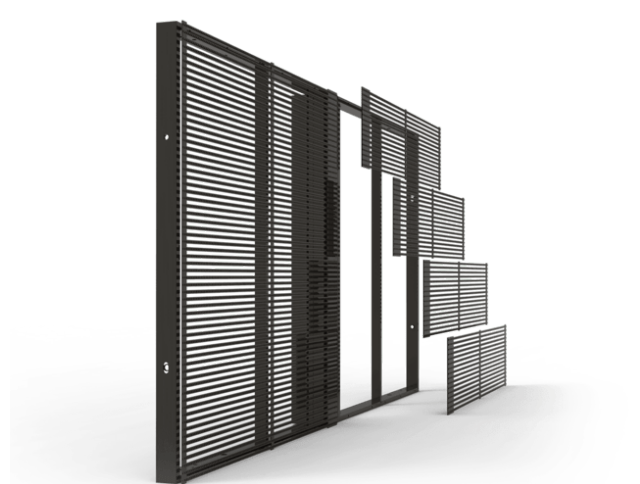
Transparent glass LED display panels allow for a stunning display of visual effects on any glass surface that is sure to dazzle your audience. Transparent LED displays are highly suitable for retail and leisure applications.

Designed for transparent LED display boards, it is light in weight and high in brightness – a superior choice for advertising, promotion or entertainment.

This colour quality of our transparent LED is supremely excellent. It has full brightness of between 1000 - 5000mcd, which is no lower than the normal conventional LED display screen.

Even if you are to face your transparent LED screen outward from your facade, it will still achieve highly visible image from strong sunlight.

The latest SMD technologies also allow the light to spread evenly throughout the whole screen.



## LED Transparent Glass Screens

### Transparent Glass Mesh LED Panels - Options

Pixel Pitch	2.6-5.2mm	2.6-5.6mm	3.125mm	3.9-7.8mm
Pixel Density	73728/m <sup>2</sup>	61952/m <sup>2</sup>	102400/m <sup>2</sup>	32768/m <sup>2</sup>
Cabinet Size	1000x500mm/1000x1000mm	1000x500mm	1000x1000mm	1000x500mm
Brightness	5000cd/m <sup>2</sup> / 1500cd/m <sup>2</sup>	≥5000cd/m <sup>2</sup>	≥1000cd/m <sup>2</sup> / 5-6000cd/m <sup>2</sup>	≥4500cd/m <sup>2</sup>
Light Through	≥ 50%	≥ 75%	≥ 55%	≥ 70%
Drive Mode	Constant current	Constant current	Constant current	Constant current
Frame Rate	50 / 60	50 / 60	50 / 60	50 / 60
Refresh Rate	1920Hz / ≥ 1920Hz	≥ 1920Hz	≥ 2600Hz	≥ 1920Hz
Max Power	800 W/m <sup>2</sup>	800 W/m <sup>2</sup>	800 W/m <sup>2</sup>	600 W/m <sup>2</sup>
Avg Power	220 W/m <sup>2</sup>	220 W/m <sup>2</sup>	220 W/m <sup>2</sup>	220 W/m <sup>2</sup>
LED Life	80,000 hours	80,000 hours	80,000 hours	80,000 hours
Continuous	≥ 7 x 24 hrs	≥ 7 x 24 hrs	≥ 7 x 24 hrs	≥ 7 x 24 hrs
Working Temp	10°C ~ 40°C	10°C ~ 40°C	10°C ~ 40°C	10°C ~ 40°C
Working Humidity	15% ~ 90%	15% ~ 90%	15% ~ 90%	15% ~ 90%

Pixel Pitch	7.8mm	10.42mm	15.625mm
Pixel Density	16384/m <sup>2</sup>	9216/m <sup>2</sup>	4096/m <sup>2</sup>
Cabinet Size	1000x500mm	1000x1000mm	1000x1000mm
Brightness	1000-5000cd/ m <sup>2</sup>	5000cd/ m <sup>2</sup>	≥1500cd/ m <sup>2</sup>
Light Through	≥ 75%	≥ 85%	≥ 75%
Drive Mode	Constant current	Constant current	Constant current
Frame Rate	50 / 60	50 / 60	50 / 60
Refresh Rate	≥ 1920Hz	≥ 1920Hz	≥ 1920Hz
Max Power	600 W/m <sup>2</sup>	800 W/m <sup>2</sup>	600 W/m <sup>2</sup>
Avg Power	180 W/m <sup>2</sup>	220 W/m <sup>2</sup>	240 W/m <sup>2</sup>
LED Life	80,000 hours	80,000 hours	80,000 hours
Continuous	≥ 7 x 24 hrs	≥ 7 x 24 hrs	≥ 7 x 24 hrs
Working Temp	10°C ~ 40°C	10°C ~ 40°C	10°C ~ 40°C
Working Humidity	15% ~ 90%	15% ~ 90%	15% ~ 90%

# LED Displays

## LED Transparent Glass Screens

### Transparent Film Screen

Transparent film screen is a flexible, ultra-thin, ultra-light transparent screen that can be attached directly to the glass surface. The thickness of the film is 1-3mm and it is ultra light weighing just 1 - 3.5 Kg/m<sup>2</sup>.

It has a high transparency, the light source can have a maximum transmittance of 85%, which will not affect natural lighting. The film has a high level of invisibility, the LED lamp and drive chip are invisible to the naked eye.

It is not limited by size as it can be cut to size, and it flexible, so it can be fixed to a curved glass or wall. The film is easily fitted, just stick the membrane screen gently on the the surface and connect the signal and power.

It is very suitable for shop windows and small glass displays, especially for promotional and advertising applications



Pixel Pitch	Pixel Density	Module Size	Avg Brightness	High Brightness
<b>P30</b>	1111/m <sup>2</sup>	1020x240mm	1500cd/m <sup>2</sup>	-
<b>P20</b>	2500/m <sup>2</sup>	1000x240mm	1500 ~ 2000cd/m <sup>2</sup>	3000cd/m <sup>2</sup>
<b>P16</b>	3906/m <sup>2</sup>	1008x240mm	1500 ~ 2000cd/m <sup>2</sup>	3000 ~ 3500cd/m <sup>2</sup>
<b>P10</b>	10000/m <sup>2</sup>	1000x240mm	1500 ~ 2000cd/m <sup>2</sup>	3500 ~ 4000cd/m <sup>2</sup>
<b>P8</b>	15625/m <sup>2</sup>	1000x240mm	1500 ~ 2000cd/m <sup>2</sup>	3500 ~ 4000cd/m <sup>2</sup>
<b>P5-10</b>	20000/m <sup>2</sup>	1000x240mm	1500 ~ 2000cd/m <sup>2</sup>	3000 ~ 3500cd/m <sup>2</sup>
<b>P6.5</b>	27777/m <sup>2</sup>	1000x208mm	1000 ~ 1500cd/m <sup>2</sup>	3000cd/m <sup>2</sup>
<b>P4.8</b>	31250/m <sup>2</sup>	1000x240mm	1000 ~ 1500cd/m <sup>2</sup>	3000cd/m <sup>2</sup>



## LED Transparent Glass Screens

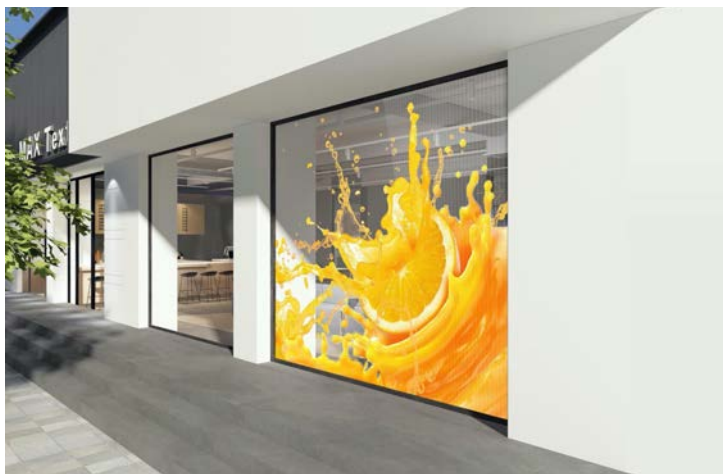
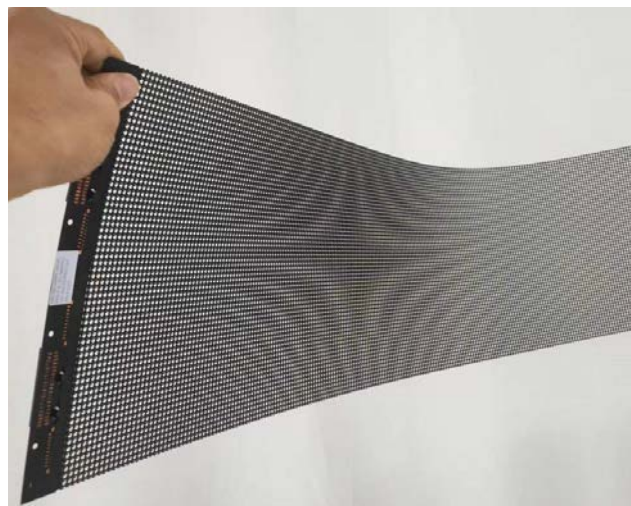
### Transparent Flexible Screen

The flexible LED screen is ultra-light, ultra-thin, it can be front or rear mounted on glass and has minimal installation and maintenance.

It's flexible, and like the film, can be cut and adapted to be shaped to fit complex applications. It is lightweight and has no strict requirements for load bearing.

The screen can be ideally used in shopping centres, exhibition halls, stages and all applications where a light weight screen is required that doesn't impose on the surroundings too much.

The content of the screen can take on a 3D and holographic effect because of the transparency of the screen and is a fantastic medium for stunning and creative content that doesn't interfere with the visibility through the glass in a retail outlet for example.



Pixel Pitch	P3.91	P6.25
Transparency	92%	95%
Density (dot/m <sup>2</sup> )	65536/m <sup>2</sup>	25600/m <sup>2</sup>
Module Size	1000x250mm / 1200x250mm	1000x250mm / 1500x250mm
Resolution	256x64 / 300x64	160x40 / 240x40
Weight	6Kg/m <sup>2</sup>	6Kg/m <sup>2</sup>
Brightness	1500 ~ 3000cd/m <sup>2</sup>	1500 ~ 3000cd/m <sup>2</sup>
Max Power Consumption	800W/m <sup>2</sup>	800W/m <sup>2</sup>
Avg Power Consumption	200W/m <sup>2</sup>	200W/m <sup>2</sup>
Lifespan	≥100,000 hours	≥100,000 hours



# LED Displays

## LED Transparent Glass Screens

Customise your LED Project with LED Transparent Screens



# LED Displays

## LED Transparent Glass Screens





# LED Displays

## LED Transparent Glass Screens





# LED Displays

## LED Transparent Glass Screens

