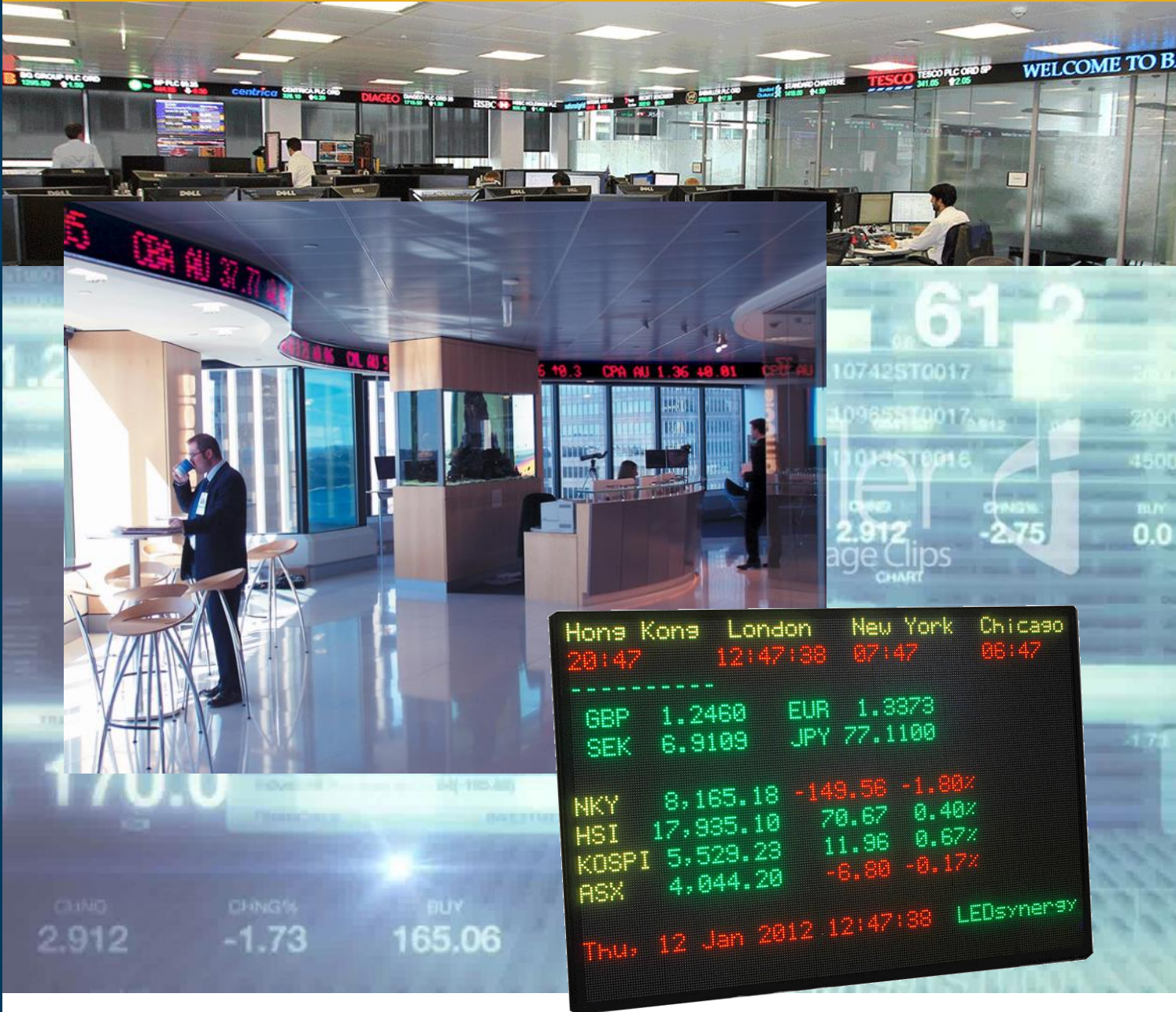


# Financial & Ticker Displays



## FEATURES AND FACILITIES

- **CHOICE OF SIZES**  
*- ask for details and prices*
- **FULLY WEATHERPROOFED**
- **INSTALLATION**  
*- ask for details and prices*
- **EASY TO USE SOFTWARE**
- **MULTIPLE INPUT**
- **MAINTENANCE PACKAGES**  
*- ask for details*

# Financial & Ticker Displays

## Financial News

An ever increasing demand for up to the minute financial information requires a flexible and instant means of communicating this data to a wide audience (*public or dealers*). An LED display fulfils this role as it continuously poles the information from source to display. On-the-fly editing and fixed pre-programmed calculations provides a highly adaptable method of display.

Typically our LED displays are suitable for stock exchange information in city financial institutions or banking corporations. A simple and highly effective example might include a FTSE ticker running the latest stock prices showing gains or losses. With the added advantage of highlighting gains in green and losses in red a tri-colour ticker is easy to take at-a-glance views of the current days trading.



Left: Montage showing various LED ticker displays in full colour

Call us on 01264 303030 for more information

# Financial & Ticker Displays

## Financial News



Above: External curved full colour LED ticker installed at the Clydesdale bank. Although the display can show various text heights and graphics, it is shown here running 350mm high text



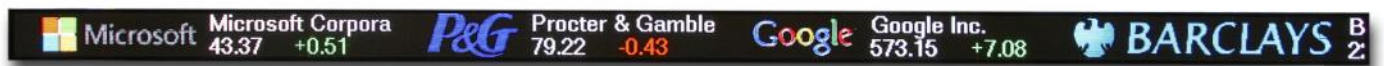
Above: Full colour display at CME Europe, world time zone clock, ticker display, shares and information



Left: Full colour curved internal ticker installed at Glasgow airport showing logos as well as stock prices and currency rates

# Financial & Ticker Displays

## Ticker Displays



Above: Full colour Ticker display installed to the perimeter of the dealing room, constantly informing the dealers of prices/

Left and Below: Dealing room ticker displays showing stock prices



Call us on 01264 303030 for more information

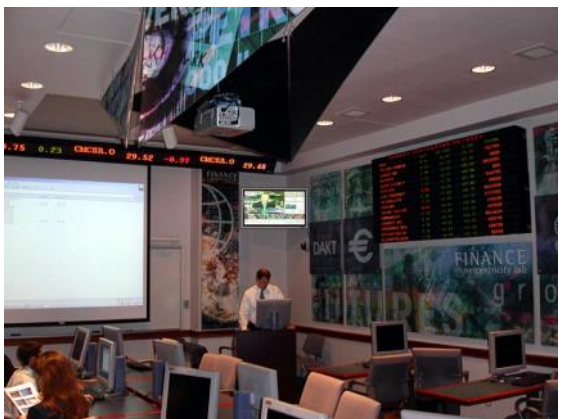
# Financial & Ticker Displays

## Ticker Displays



Left: 60mm Character Height single colour display (single colour LED boards using green and red) Trader stocks. Video board to right and global time zone clocks at the head of the board

Below: Full colour LED ticker display installed externally onto a building, showing welcome message as well as new information.



# Financial & Ticker Displays

## Making History!



Left: Ticker Display installed to front of building, white LEDs

Below: 8 line tri-colour display Showing financial information



Left: Some 35 years ago we installed one of our very first large scale financial displays at Waterloo Station. It was the biggest financial sign of its time. How technology has moved on!!

And Below: At the turn of the Millennium we installed this 42 metre long Ticker display on the roof of the Reuters building in London. It was the biggest outdoor display at that time. Making history again!



Call us on 01264 303030 for more information

# Financial & Ticker Displays

## Operation



Above: Full colour Ticker at Glasgow airport showing stock market information  
Left: Stairwell display showing text in a vertical fashion

### OPERATION

**LEDsynergy** Financial Displays are easily programmable, with various methods of operation to suit almost any application.

#### **Keyboard Operation**

The simplest way to program a Financial Display, is using the standard **LEDsynergy** RMSP-100 Infra-Red Keyboard. The keyboard is simply pointed at the display and the message is typed into the display.

#### **PC Operation**

**LEDsynergy** Financial Displays can also be programmed from remote locations using PC's and Windows Compatible Software.

The displays can be connected to PC's in various ways:

- Connected directly to a PC's Serial Communication Port
- Via dial-up modem
- Over Ethernet TCP/IP network

Messages are edited/ composed on PC and then downloaded or sent to the display.

#### **POPULAR COMMUNICATION OPTIONS** *(Many others are available)*

- RS232** – Connected directly to the serial communication port of a PC. The cabling is limited to a maximum of 50 meters between the PC and the display. RS232 is suitable for single display applications with short cable lengths.
- RS485** – Connected to the serial communication port of a PC via a RS232 to RS485 converter. Suitable for use in connecting many signs together on the same cable with no conflicts, in electrically noisy environments.
- Ethernet** – Connected directly into a TCP/IP Ethernet network, and assigned its own IP address. Suitable for use where there is an existing network infrastructure.
- Modem** – Connected directly to a modem that answers an incoming call from the PC operator, and will disconnect after the message has been transmitted. Suitable for use where there is an existing telephone line and other communication options are unsuitable.
- Others** – including Pagers, Newswire, Radio Modems, Keypad, Fibre Optics, please contact us for a more detailed information.

# about us

As an established leader in the UK for electronic message display signs and with 40 years experience in the business of supplying programmable LED signs and LED displays, you can be sure that we'll give you the right advice and excellent service, these are the values that we hold dear.

We are a British company and we pride ourselves in our commitment to our customers, product performance and our quality of service. In the past 40 years we have installed in the region of nearly 20,000 LED screens and displays to a broad spectrum of clients. As a LED display LED screen manufacturer we are able to offer a complete bespoke solution from concept to commissioning offering you the most cost effective solution to your needs.

If you'd like to talk to us about how we can help you just call us. There's no obligation and we don't charge for quotations. We can work together to be sure that the LED sign solution we offer you is absolutely the correct solution for your requirements.

For demonstrations and to view our extensive range of LED displays please contact us to arrange a visit to our showroom at our base in Andover, Hampshire. Just call us on 01264 303030.

## accreditations

LED Synergy Electronic Displays have 40 years experience in the manufacture and supply of electronic displays to many companies and individuals worldwide. We have a wealth of experience and expertise and have been accredited with the following certifications:



ISO9001



WASTE ELECTRICAL and ELECTRONIC EQUIPMENT



RESTRICTION of HAZARDOUS SUBSTANCES



EUROPEAN COMFORMITY



UNDERWRITERS LABORATORIES



SAFE CONTRACTOR



We are also an approved Highways Agency contractor



- *Simple to operate products with bespoke software*
- *Value for money & satisfaction guaranteed*
- *Superb British manufactured products*
- *Excellent support & customer service*

"The largest display in Europe, tight timelines and interesting integration to our system, well done, the opening was a great success and the display looked stunning." - National Westminster Bank



We accept most major credit and debit cards

"Well done, system all up and running for D-day, and very positive comments from all the staff." Richard Aschough (Treasury) - Bank of England

"The LED displays have proved invaluable in enabling us to direct large numbers of personnel quickly and efficiently throughout the building. Reliability is paramount in our facility and the led displays have performed faultlessly, I would not hesitate in recommending them."  
Lez Smith (Head of Security) Citigroup

**LEDsynergy**

Tel: 01264 303030 Fax: 01264 304030 [info@LEDsynergy.co.uk](mailto:info@LEDsynergy.co.uk)

