

# Inbuilt LED Displays



## FEATURES AND FACILITIES

- **CHOICE OF SIZES**  
*- ask for details and prices*
- **FULLY WEATHERPROOFED**
- **INSTALLATION**  
*- ask for details and prices*
- **EASY TO USE SOFTWARE**
- **MULTIPLE INPUT**
- **MAINTENANCE PACKAGES**  
*- ask for details*

# Inbuilt LED Displays

## Examples

Our standard displays can be adapted to be incorporated into an existing structure or housing. With a certain degree of flexibility the displays can run around an object, sunken into a surface, run up walls, recessed into floors, placed behind virtually opaque glass or run across ceilings. The lumination properties allow the display to be placed behind semi opaque materials so that for all intents and purposes the finished surface looks clean and smooth, however when the LED luminates from behind it shines through thus showing only when the message passes.

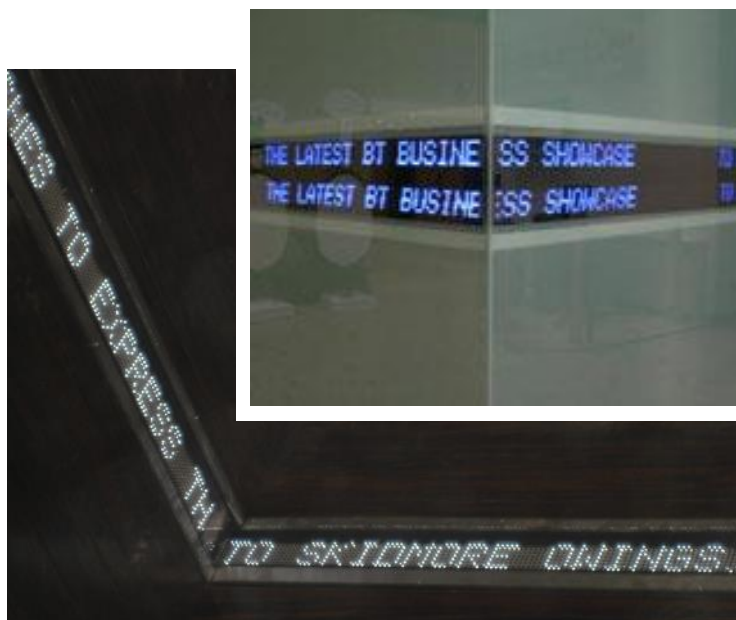
Other applications may include exhibition props with an LED message display included as part of the design.



Above: Blue LEDs installed within a curved point of sale display unit within a retail outlet  
*Reebok Store*



Above: Curved LED display installed around a circular light well within the reception area  
*Bosch group*



Right: Frosted monolith with vertical LED text running within

Left above: photo shows LED display (blue) running around a corner and built in flush with surround.

Left: shows LED display (white) running across floor and up a wall all built in and flush with surround





# Inbuilt LED Displays

## Examples



Left : An LED display recessed into a foyer area with heavy duty glass front for pedestrian traffic.

Below: in-built display into floor and wall with financial information updated regularly



Below and Below Left: LED single line display inbuilt into the walls. The photo below left has blue LEDs running vertical text constantly showing financial information



# Inbuilt LED Displays

## Examples



Above Left: Trade stand, small LED display in-built to promotional POS to mimic a credit card  
*American Express*



Above: Single Line LED display with white LEDs built into POS shop display.  
*Chanel*



Right: An LED display running behind Business area aboard  
The Oriana cruise liner  
*P&O Ferries*

Left: Inbuilt curved display with blue LEDs  
*The Sony Store*





# Inbuilt LED Displays

## Examples



Above: Curved single line LED displays installed around cylindrical 'pods' and conical work stations at the BBC, the displays are somewhat sculptural. *BBC Scotland*

Below in-built to a panelled wall with integral Stainless steel trim surround. The displays are decorative as well informative



Right: 800mm LED digits inbuilt to the side of an HGV lorry which travelled the country informing the public of the National Debt.  
*UK Debt Clock*

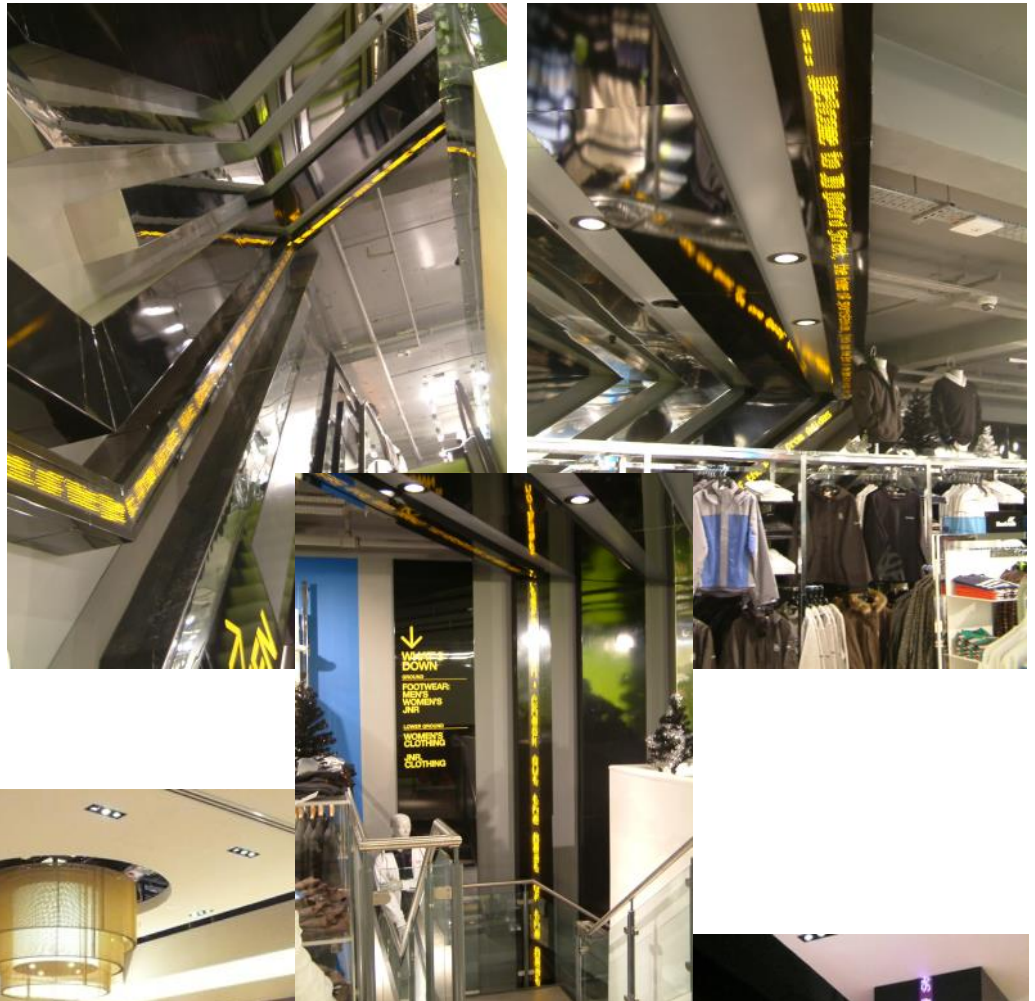
Below: display recessed into a reception and gate signage system. *Barcardi Distribution Centre*



# Inbuilt LED Displays

## Examples

Right and Below Right:  
60mm character height  
continuous single line  
yellow LED message  
display comprising 3 main  
sections running up an  
escalator from one side,  
across ceiling to other side  
of shop and down beside a  
flight of stairs. Total length  
approx 40metres. *JD Sports  
Oxford St. London*



Photos above and right: 60mm character height continuous single line  
white LED message display comprising 2 sections running across counter  
top beneath glass and up a marble column. Note the lens has a mauve  
colour filter.

*Thomas Pink, London Heathrow, Terminal 5*



# Inbuilt LED Displays

## Examples



Left: Inbuilt into a outdoor kiosk a single line display running around the perimeter of the building

Right: LED clock inbuilt into monolith casing showing tour times  
*Tower of London*



## OPERATION

**LEDsynergy** LED System Displays are easily programmable, with various methods of operation to suit almost any application.

### Keyboard Operation

The simplest way to program one of our LED Display Units, is using the standard **LEDsynergy** RMSP-100 Infra-Red Keyboard. The keyboard is simply pointed at the display and the message is typed into the display.

### PC Operation

**LEDsynergy** LED System Displays can also be programmed from remote locations using PC's and Windows Compatible Software.

The displays can be connected to PC's in various ways:

- Connected directly to a PC's Serial Communication Port
- Via dial-up modem
- Over Ethernet TCP/IP network

Messages are edited/ composed on PC and then downloaded or sent to the display.

### POPULAR COMMUNICATION OPTIONS *(Many others are available)*

- RS232** – Connected directly to the serial communication port of a PC. The cabling is limited to a maximum of 50 meters between the PC and the display. RS232 is suitable for single display applications with short cable lengths.
- RS485** – Connected to the serial communication port of a PC via a RS232 to RS485 converter. Suitable for use in connecting many signs together on the same cable with no conflicts, in electrically noisy environments.
- Ethernet** – Connected directly into a TCP/IP Ethernet network, and assigned its own IP address. Suitable for use where there is an existing network infrastructure.
- Modem** – Connected directly to a modem that answers an incoming call from the PC operator, and will disconnect after the message has been transmitted. Suitable for use where there is an existing telephone line and other communication options are unsuitable.
- Others** – Including Pagers, Newswire, Radio Modems, Keypad, Fibre Optics, please contact us for a more detailed information.

# about us

As an established leader in the UK for electronic message display signs and with 40 years experience in the business of supplying programmable LED signs and LED displays, you can be sure that we'll give you the right advice and excellent service, these are the values that we hold dear.

We are a British company and we pride ourselves in our commitment to our customers, product performance and our quality of service. In the past 40 years or more we have installed in the region of nearly 20,000 LED screens and displays to a broad spectrum of clients. As a LED display LED screen manufacturer we are able to offer a complete bespoke solution from concept to commissioning offering you the most cost effective solution to your needs.

If you'd like to talk to us about how we can help you just call us. There's no obligation and we don't charge for quotations. We can work together to be sure that the LED sign solution we offer you is absolutely the correct solution for your requirements.

For demonstrations and to view our extensive range of LED displays please contact us to arrange a visit to our showroom at our base in Andover, Hampshire. Just call us on 01264 303030.

## accreditations

LED Synergy Electronic Displays have 40 years experience in the manufacture and supply of electronic displays to many companies and individuals worldwide. We have a wealth of experience and expertise and have been accredited with the following certifications:



ISO9001



WASTE  
ELECTRICAL and  
ELECTRONIC  
EQUIPMENT



RESTRICTION of  
HAZARDOUS  
SUBSTANCES



EUROPEAN  
CONFORMITY



UNDERWRITERS  
LABORATORIES



SAFE  
CONTRACTOR



**We are also an approved  
Highways Agency contractor**



- **Simple to operate products with bespoke software**
- **Value for money & satisfaction guaranteed**
- **Superb British manufactured products**
- **Excellent support & customer service**



We accept most major credit and debit cards

"This huge sign caused great excitement at the start of the new Millennium, with welcoming messages uploaded from around the world it brought the year 2000 in with a bang!". *Reuters*

"Thank you for all your help in the installation of the Help Desk Control system. The system has been up and running for over a year, and surpassed the trial findings. We were able to achieve a complete system payback within 6 months."

*Tony Lawrence (Technical Support Manager) - Lloyds TSB*

"The LED displays have proved invaluable in enabling us to direct large numbers of personnel quickly and efficiently throughout the building. Reliability is paramount in our facility and the led displays have performed faultlessly, I would not hesitate in recommending them."

*Lez Smith (Head of Security) Citigroup*

**LEDsynergy**

**Tel: 01264 303030 Fax: 01264 304030 [info@LEDsynergy.co.uk](mailto:info@LEDsynergy.co.uk)**

