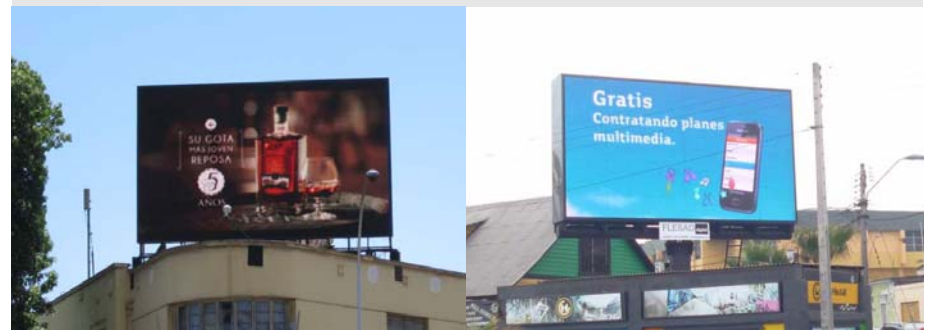
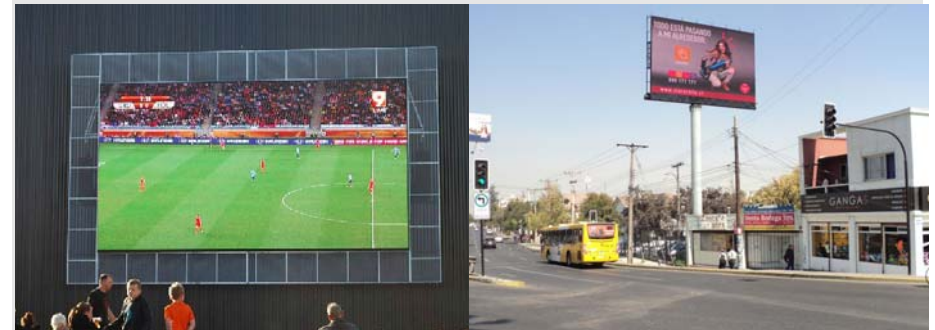


## Synergy Video LED Displays - Tfixed Outdoor Screen



### Synergy Tfixed - Outdoor

- Ruggedized display for demanding outdoor application
- Modular LED cabinet design allows virtually any size or shape of display
- Available with front or back maintenance service access
- High brightness levels from 7500 for exceptional picture quality in direct sunlight
- IP65 waterproof rating to withstand the harshest of weather conditions
- Highest quality LEDs used
- Available in the following pixel pitches:  
**10mm, 12mm, 16mm, 20mm**



# Synergy Video Displays - Synergy Tfixed Outdoor - Specifications

Model:	Synergy Tfixed 10	Synergy Tfixed 12	Synergy Tfixed 16	Synergy Tfixed 20
LED type	DIP LEDs	DIP LEDs	DIP LEDs	DIP LEDs
LED driving method	Static	1/4 dynamic scan	Static	Static
Pixel pitch	10 mm	12 mm	16 mm	20 mm
Pixel configuration	1 R 1G 1B	1 R 1G 1B	1 R 1G 1B	1 R 1G 1B
LED cabinet size	1280 x 960 x 150 mm	1152 x 960 x 150 mm	1280 x 960 x 150 mm	1280 x 960 x 150 mm
Pixels	128 x 96 (w x h)	96 x 80 (w x h)	80 x 60 (w x h)	64 x 48 (w x h)
Net weight	75 kg	72 kg	75 kg	72 kg
Power	AC220/110±10%,47 ~ 63 Hz			
Waterproof	Front IP65 / Rear IP54			
Serviceability	Rear Service			
Max power consumption	≤750 W/m <sup>2</sup>	≤750 W/m <sup>2</sup>	≤750 W/m <sup>2</sup>	≤750 W/m <sup>2</sup>
Avg. power consumption	≤300 W/m <sup>2</sup>	≤300 W/m <sup>2</sup>	≤300 W/m <sup>2</sup>	≤300 W/m <sup>2</sup>
Horizontal Viewing angle	120°			
Vertical viewing angle	60°			
Brightness	≥7,000 cd/m <sup>2</sup>	≥7,500 cd/m <sup>2</sup>	≥8,500 cd/m <sup>2</sup>	≥7,500 cd/m <sup>2</sup>
Pixel density	10,000 pixels/m <sup>2</sup>	6,944 pixels/m <sup>2</sup>	3,906 pixels/m <sup>2</sup>	2,500 pixels/m <sup>2</sup>
Certifications	UL, CE, ETL, ROHS, CCC			
Contrast ratio	1000:1			
Operation temperature	-20°C ~ +60°C			
Operation humidity	20% to 90%			
Lifetime (50% brightness)	100,000 hours			
Colour depth	16 bit	16 bit	16 bit	16 bit
Colours	281 trillion	281 trillion	281 trillion	281 trillion
Refresh rate	≥4,200 Hz	≥4,200 Hz	≥4,200 Hz	≥4,200 Hz
Frame rate	60fps			
Brightness level	Manually 100 levels, automatically 16 levels			

Call us on 01264 303030 for more information

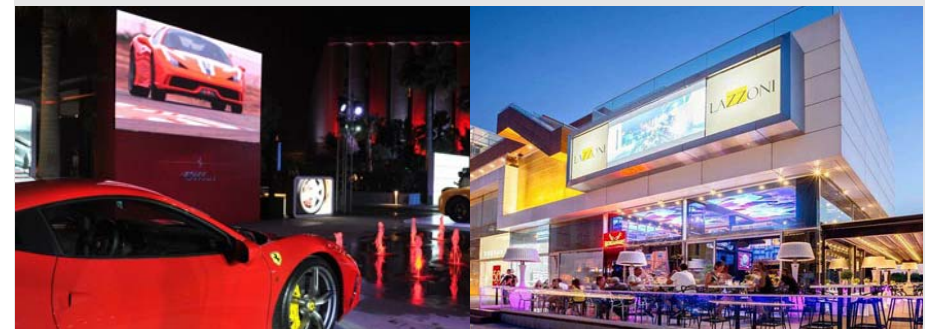
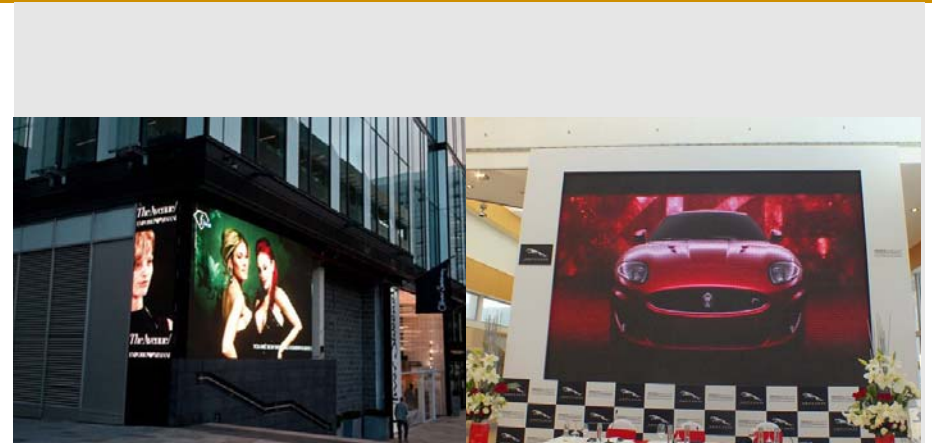
[www.LEDsynergy.co.uk](http://www.LEDsynergy.co.uk)

## Synergy Video LED Displays - TfixedS Outdoor Screen



### Synergy TfixedS - Outdoor

- High resolution displays for spectacular close range viewing
- Integrated SMD LEDs allow for incredibly high resolutions
- Stunning picture quality, suitable for viewing distances as close as 2.5 metres
- Available with front or rear service access
- Small cabinet size allows flexibility to create display of any size or shape
- IP65 waterproof rating to withstand harshest of weather conditions
- Available in the following pixel pitches:  
**5mm, 6mm, 8mm, 10mm**

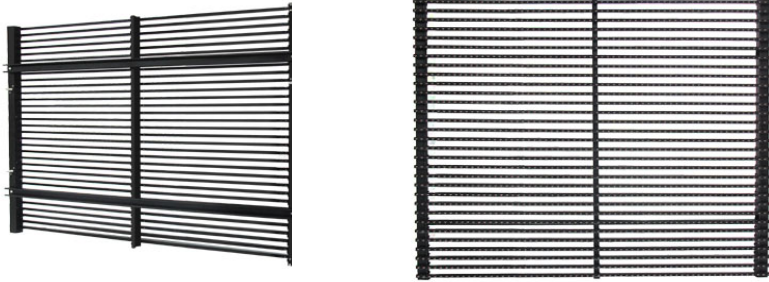


# Synergy Video Displays - Synergy TfixedS Outdoor - Specifications

Model:	Synergy TfixedS 5	Synergy TfixedS 6	Synergy TfixedS 8	Synergy TfixedS 10
LED type	SMD LEDs	SMD LEDs	SMD LEDs	SMD LEDs
LED driving method	1/8 dynamic scan	1/8 dynamic scan	1/4 dynamic scan	1/2 dynamic scan
Pixel pitch	5 mm	6 mm	8 mm	10 mm
Pixel configuration	1 R 1G 1B	1 R 1G 1B	1 R 1G 1B	1 R 1G 1B
LED cabinet size	1280 x 960 x 100 mm	1152 x 960 x 100 mm	1280 x 1024 x 150 mm	1280 x 960 x 100 mm
Pixels	256 x 192 (w x h)	192 x 160 (w x h)	160 x 128 (w x h)	128 x 96 (w x h)
Net weight	55 kg	50 kg	75 kg	55 kg
Power	AC220/110±10%,47 ~ 63 Hz			
Waterproof	Front IP65 / Rear IP54			
Serviceability	Rear Service			
Max power consumption	≤950 W/m <sup>2</sup>	≤950 W/m <sup>2</sup>	≤950 W/m <sup>2</sup>	≤950 W/m <sup>2</sup>
Avg. power consumption	≤350 W/m <sup>2</sup>	≤350 W/m <sup>2</sup>	≤350 W/m <sup>2</sup>	≤350 W/m <sup>2</sup>
Horizontal Viewing angle	140°			
Vertical viewing angle	140°			
Brightness	≥6,000 cd/m <sup>2</sup>	≥6,000 cd/m <sup>2</sup>	≥6,000 cd/m <sup>2</sup>	≥7,500 cd/m <sup>2</sup>
Pixel density	40,000 pixels/m <sup>2</sup>	27,777 pixels/m <sup>2</sup>	15,625 pixels/m <sup>2</sup>	10,000 pixels/m <sup>2</sup>
Certifications	UL, CE, ETL, ROHS, CCC			
Contrast ratio	4000:1			
Operation temperature	-20°C ~ +60°C			
Operation humidity	20% to 90%			
Lifetime (50% brightness)	100,000 hours			
Colour depth	16 bit	16 bit	16 bit	16 bit
Colours	281 trillion	281 trillion	281 trillion	281 trillion
Refresh rate	≥4,200 Hz	≥4,200 Hz	≥4,200 Hz	≥4,200 Hz
Frame rate	60fps			
Brightness level	Manually 100 levels, automatically 16 levels			

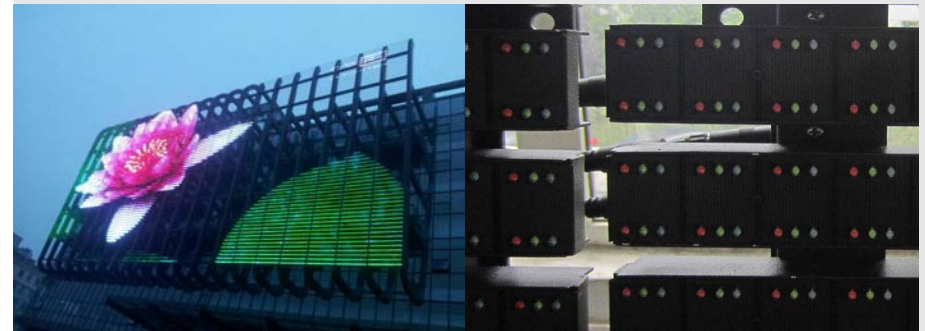


## Synergy Video LED Displays - iCurtain Outdoor Screen



### Synergy iCurtain - Outdoor

- Very slim depth cabinet, thickness of only 56mm.
- LED strips can be installed horizontal or vertical depending upon the project requirements
- Cabinet design is light weight, 22kg/m<sup>2</sup>, which helps with ease of installation
- High transparent, without power supply and controller in the LED curtain cabinet
- Perfect product for high transparent, low weight, low power consumption, and low cost
- Available in the following pixel pitches:  
**20mm, 25mm, 37.5mm, 50mm**



# Synergy Video Displays - Synergy iCurtain Outdoor - Specifications

Model:	Synergy iCurtain 20	Synergy iCurtain 25	Synergy iCurtain 37.5	Synergy iCurtain 50
LED type	DIP LEDs	DIP LEDs	DIP LEDs	DIP LEDs
LED driving method	static	static	static	static
Pixel pitch	20 mm	25 mm	37.5 mm	50 mm
Pixel configuration	1 R 1G 1B	1 R 1G 1B	2 R 2G 2B	2 R 2G 2B
LED cabinet size	1280 x 1280 x 56 mm	1600 x 1600 x 56 mm	1200 x 1200 x 56 mm	1600 x 1600 x 56 mm
Pixels	64 x 64 (w x h)	64 x 64 (w x h)	32 x 32 (w x h)	32 x 32 (w x h)
Net weight	36 kg	56 kg	32 kg	56 kg
Power	AC220/110±10%,47 ~ 63 Hz			
Waterproof	Front IP67 / Rear IP67			
Serviceability	Front / Rear Service			
Max power consumption	≤550 W/m <sup>2</sup>	≤550 W/m <sup>2</sup>	≤500 W/m <sup>2</sup>	≤450 W/m <sup>2</sup>
Avg. power consumption	≤200 W/m <sup>2</sup>	≤200 W/m <sup>2</sup>	≤180 W/m <sup>2</sup>	≤150 W/m <sup>2</sup>
Horizontal Viewing angle	120°			
Vertical viewing angle	60°			
Brightness	≥7,000 cd/m <sup>2</sup>	≥7,000 cd/m <sup>2</sup>	≥5,500 cd/m <sup>2</sup>	≥5,000 cd/m <sup>2</sup>
Pixel density	2,500 pixels/m <sup>2</sup>	1,600 pixels/m <sup>2</sup>	711 pixels/m <sup>2</sup>	711 pixels/m <sup>2</sup>
Transparency	25% to 75%			
Certifications	UL, CE, ETL, ROHS, CCC			
Contrast ratio	4000:1			
Operation temperature	-20°C ~ + 60°C			
Operation humidity	20% to 90%			
Lifetime (50% brightness)	100,000 hours			
Colour depth	16 bit	16 bit	16 bit	16 bit
Colours	281 trillion	281 trillion	281 trillion	281 trillion
Refresh rate	≥4,200 Hz	≥4,200 Hz	≥4,200 Hz	≥4,200 Hz
Frame rate	60fps			
Brightness level	Manually 100 levels, automatically 16 levels			

Call us on 01264 303030 for more information

[www.LEDsynergy.co.uk](http://www.LEDsynergy.co.uk)

# Synergy Video Displays - Synergy Outdoor - Our Standards

- The visual impact of an LED video screen is determined by a variety of different factors, pixel pitch, display area, colour uniformity, grey levels, refresh rate, module and cabinet manufacture, LED degradation control, etc. Therefore, choosing the right technology and supplier can be a daunting task. We can help you to make the right decision to ensure that you have the correct solution not just for today but throughout the lifetime of the display. Based on our experience, continued innovation, military grade quality and reliability of the product and its longevity. We use European design and development coupled with the very best Chinese manufacturing to ensure the latest technologies at a cost effective price.
- With our extensive experience in the LED industry over the years, we have focused heavily on R and D analysing image quality, pixel configuration and contrast ratio as well as brightness levels, viewing angles and a higher contrast. By utilising smaller size LEDs and grouping the red, blue and green LEDs closer together this provides a better looking image with an improved colour mix, sharper lines, better images and more vivid colours.
- Many LED displays cannot operate at low brightness levels, such as at night, and still maintain an optimal number of colours and shades. If the grey scale is adjusted lower the screen will have a ripple. Our 16 bit LED drivers will display a wider colour spectrum at all levels of brightness. Other LED displays on the market often suffer from unsightly colour banding that at low brightness (such as night) can only display a few shades of a given colour. However, our 16 bit LED drivers output a greater variety of colours at all brightness levels for a uniformly smoother viewing experience.
- The LEDs are the most important component used in manufacture of an LED display, being approximately 60% of the total cost. Therefore you need to make sure of the uniformity of the LEDs. BINs are groups of LEDs with the same brightness and colour shade, the same batch you could say. Our LED screens are made up from the same bin LEDs keeping the same high quality of brightness and same colour uniformity negating the need for calibration of the screen. Calibration is necessary only when LED screen manufacturers use LEDs from different bin batches. When this is done the display is calibrated down to the brightness of the dimmest LEDs.
- Colour uniformity of the LEDs is of paramount importance to us which is why we use same bin LEDs. When LEDs are calibrated to the dimmest some of these LEDs are operating at higher power levels than others, causing a premature uneven illumination image of the screen. Therefore, these LEDs are also operating at a much higher temperature than others and heat is the leading cause of LED light degeneration over time. Our same bin LEDs do not require calibration to produce optimal images. They operate at a uniform power level, display cleanly at wider viewing angles and have more brilliance to them.
- The chip is a key factor in a small RGB LED lamp, it will directly affect the life span, brightness and viewing angle etc. We will always use a big chip for the LED displays to ensure the high quality. 12 mil is our minimum requirement for the LEDs. Often manufacturers use as little as 8mil to 9 mil, this reduces the cost of the display but will affect the quality and the brightness in a relatively short time period.
- The pure white LEDs are used as one of the leading standards to determine the quality of an LED screen. Our pure white LEDs are truly 'pure white' due to the fact that we use same bin LEDs and our big chip which means that we can achieve the same colour on the display with high brightness over time. A lower cost of LED display will be manufactured with different bin LEDs and different quality LEDs which makes it very difficult to produce a consistently pure white display.
- IP65 rating makes the outdoor modules waterproofed. The circuit board can be conformal coated to protect from harsh environments that may contain moisture and chemical contaminants. The modules have been fully bench tested, vibration tested and dark room tested to ensure the high quality of the screens. Our manufacturing criteria are better than industry standards so that we can supply the very best quality displays to you.