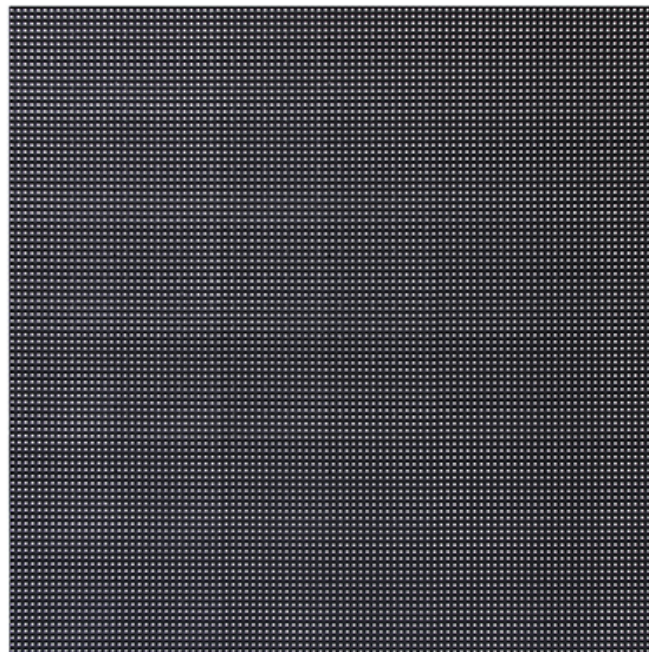
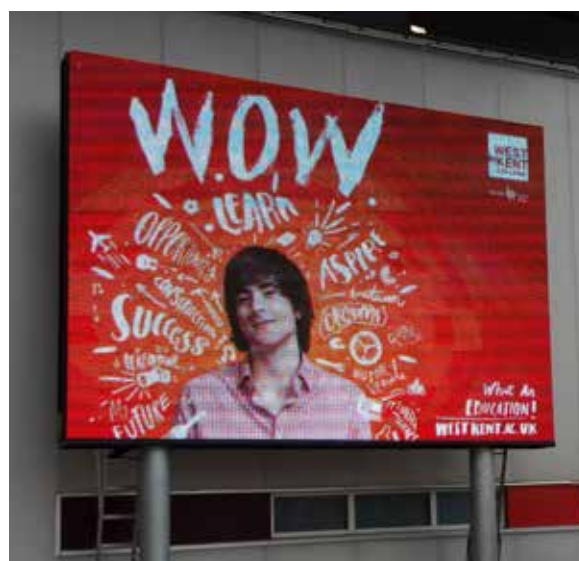
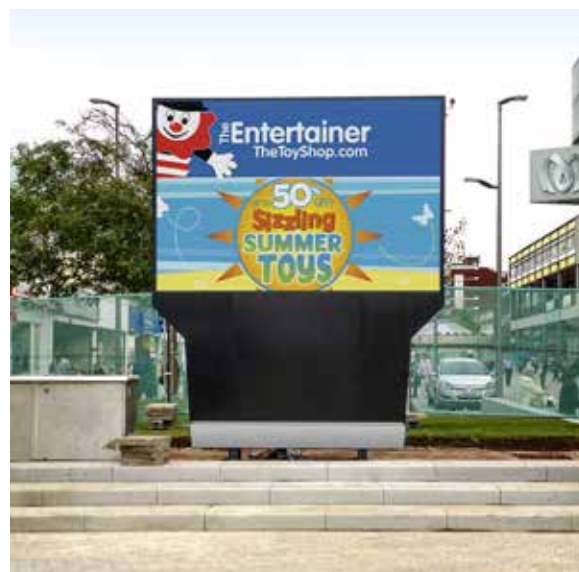


## External Video Screens



# LED Displays

## External Display Screens



## Specifications - External Front Access Display Screens

Module Specifications			
	6.67mm LED Pitch	8 mm LED Pitch	10 mm LED Pitch
<b>LED Type:</b>	SMD2727	SMD2727	SMD2727
<b>Pixel Pitch:</b>	6.67mm	8mm	10mm
<b>Pixel Configuration:</b>	1R 1G 1B	1R 1G 1B	1R 1G 1B
<b>LEDs:</b>	High Bright LEDs matt background	High Bright LEDs matt background	High Bright LEDs matt background
<b>LED Lamp:</b>	Full Colour	Full Colour	Full Colour
<b>Density - pixels/m<sup>2</sup></b>	22,477	15,625	10,000
<b>Module Size:</b>	320 x 320mm x 14mm	320 x 320mm x 14mm	320 x 320mm x 14mm
<b>Module Resolution:</b>	48 x 48 pixels - 2304 dots	40 x 40 pixels - 1600 dots	32 x 32 pixels - 1024 dots
<b>Module weight:</b>	1550gm	1550gm	1550gm
<b>Module Power:</b>	≤56.7W	≤51.55W	≤56.7W
<b>Drive Voltage:</b>	2.8v DC, 3.8v	2.8v DC, 3.8v	2.8v DC, 3.8v
<b>Module Electric Current:</b>	17.2 A	15.6 A	17.2 A
Cabinet Screen Specifications			
<b>Standard Cabinet Size:</b>	960 x 960 x90mm	960 x 960 x90mm	960 x 960 x90mm
<b>Cabinet Weight:</b>	Typically 30Kg	Typically 30Kg	Typically 30Kg
<b>Cabinet Resolution:</b>	144 x 144 pixels	120 x 120 pixels	96 x 96 pixels
<b>Light Intensity (Brightness):</b>	≥5500cd/m <sup>2</sup>	≥5000cd/m <sup>2</sup>	≥6500cd/m <sup>2</sup>
<b>Viewing Angle:</b>	140° (Horiz)/120° (Vert)	140° (Horiz)/120° (Vert)	140° (Horiz)/120° (Vert)
<b>Best Viewing Distance:</b>	7 - 100m	8 - 100m	10 - 100m
<b>Grey Scale:</b>	Within 65536 Step	Within 65536 Step	Within 65536 Step
<b>Frame Frequency:</b>	≥ 60Hz	≥ 60Hz	≥ 60Hz
<b>Refresh Rate:</b>	=3840 Hz	=3840 Hz	=3840 Hz
<b>Scanning Mode:</b>	1/6	1/5	1/2
<b>Display Colours:</b>	16,777,216	16,777,216	16,777,216
<b>Conitnuous Working Time:</b>	>24 Hrs	>24 Hrs	>24 Hrs
<b>LED Life:</b>	>100,000 Hrs continuous	>100,000 Hrs continuous	>100,000 Hrs continuous
<b>MTBF:</b>	>5000 Hrs	>5000 Hrs	>5000 Hrs
<b>Max Power Consumption:</b>	550W/m <sup>2</sup>	500W/m <sup>2</sup>	550W/m <sup>2</sup>
<b>Average Power Consumption:</b>	185W/m <sup>2</sup>	168W/m <sup>2</sup>	185W/m <sup>2</sup>
<b>Operational Temp Range:</b>	-10° to +60° Celsius	-10° to +60° Celsius	-10° to +60° Celsius
<b>Operating Humidy Range:</b>	10% to 98% RH	10% to 98% RH	10% to 98% RH
<b>Storage Temp Range:</b>	-40° to +85° Celsius	-40° to +85° Celsius	-40° to +85° Celsius
<b>Protocol:</b>	Standard	Standard	Standard
<b>Interface Type:</b>	Variable as per requirement	Variable as per requirement	Variable as per requirement
<b>Software:</b>	Various Software Options	Various Software Options	Various Software Options
<b>Maintenance:</b>	Front Access	Front Access	Front Access
<b>Certificates:</b>	EMC, BIS, PSE, FCC, CE, UL, CB	EMC, BIS, PSE, FCC, CE, UL, CB	EMC, BIS, PSE, FCC, CE, UL, CB
<b>LED Shield:</b>	Louvre above each pixel	Louvre above each pixel	Louvre above each pixel
<b>Cabinet Construction:</b>	Aluminium finished in matt black coating RAL9005	Aluminium finished in matt black coating RAL9005	Aluminium finished in matt black coating RAL9005
<b>Protection Level:</b>	IP66 / IP68	IP66 / IP68	IP66 / IP68

# about us

As an established leader in the UK for electronic message display signs and with over 35 years experience in the business of supplying programmable LED signs and LED displays, you can be sure that we'll give you the right advice and excellent service, these are the values that we hold dear.

We are a British company and we pride ourselves in our commitment to our customers, product performance and our quality of service. In the past 35 years or more we have installed in the region of nearly 20,000 LED screens and displays to a broad spectrum of clients. As a LED display LED screen manufacturer we are able to offer a complete bespoke service from concept to commissioning offering you the most cost effective solution to your needs.

If you'd like to talk to us about how we can help you just call us. There's no obligation and we don't charge for quotations. We can work together to be sure that the LED display we offer you is absolutely the correct solution for your requirements.

For demonstrations and to view our extensive range of LED displays please contact us to arrange a visit to our showroom at our base in Andover, Hampshire. Just call us on 01264 303030.

## accreditations

LED Synergy Electronic Displays have over 35 years experience in the manufacture and supply of electronic displays to many companies and individuals worldwide. We have a wealth of experience and expertise and have been accredited with the following certifications:



WE ARE ALSO AN APPROVED HIGHWAYS AGENCY CONTRACTOR

- **Simple to operate products with bespoke software**
- **Value for money & satisfaction guaranteed**
- **Superb British manufactured products**
- **Excellent support & customer service**



**"I am over the moon!"** *Quartermaster*  
- Army Land Forces HQ

**"Well done, system all up and running for D-day, and very positive comments from all the staff."**  
*Richard Aschough (Treasury) - Bank of England*

**"I've dealt with a lot of LED companies and I wouldn't ever now consider moving from LEDsynergy"** *Paul Holland - WAE Group*

**"Our new electronic displays really help, before the displays, the visitors made their way to the nearest ride or the most popular. This created large queues on some, but no waiting on other rides, but with the introduction on the boards visitors are better informed, making a more enjoyable day for all"** *Chris Burton - Park Manager - Legoland*

**LEDsynergy**

**Tel: 01264 303030    info@LEDsynergy.co.uk**

